



We'll be starting shortly...

**Regional Workforce Alliance
Quarter 3**

Note to Participants:

If you experience any difficulty connecting via Zoom at any time during the webinar please contact Sarah Reyes at:

losangeles@emeraldcities.org

Regional Workforce Alliance Q3

Monday, August 26th, 2024

Welcome

Minh Le

General Manager

Energy and Environmental Services

Los Angeles County, ISD



Agenda

- 12:05 Welcome
- 12:15 Green Jobs Regional Partnership: Ensuring Inclusive Pathways for Emerging Cleantech Careers
- 12:30 LA 2028 Olympics Green Workforce Opportunities, Anticipation, Planning, and Community Impact
- 1:00 California Energy Commission Equitable Decarbonization Program
- 1:25 Closing Remarks

Southern California REGIONAL ENERGY NETWORK

Alliance Co-Hosts



Alliance Partners



Green Jobs Regional Partnership: Ensuring Inclusive Pathways for Emerging Cleantech Careers

Kauleen Menard

Director, Green Job Regional Partnership

Los Angeles Clean Tech Incubator (LACI)





Green Jobs Regional Partnership

August 26, 2024

LACI'S MISSION IN ACTION

LACI is building an inclusive green economy, with a focus on Southern California

PRIORITIES

STRATEGIES

IMPACT

UNLOCKING INNOVATION

through startups

MARKET TRANSFORMATION

with partnerships

ENHANCING COMMUNITY

on campus and in our neighborhoods

Incubating and accelerating clean tech startups and helping commercialize their technologies

Accelerating clean tech adoption and system change by engaging key stakeholders and decision makers

Working in collaboration with local communities, identifying sustainability challenges, creating opportunities and building a workforce pipeline

EXECUTIVES IN RESIDENCE
Best-In-Class Coaching
And Advice

TRANSPORTATION ELECTRIFICATION PARTNERSHIP

DIVERSITY & INCLUSION PROGRAM

INVESTMENT PREP AND ASSISTANCE

ENERGY INNOVATION PROGRAM

GREEN JOBS WORKFORCE DEVELOPMENT TRAINING & FELLOWSHIP PROGRAMS

STARTUP PILOTS

PILOTS & DEMONSTRATIONS

WOMEN IN CLEANTECH

IMPACT & DEBT FUNDS

STRATEGIC PARTNERSHIPS

STEM MIDDLE SCHOOL GIRLS PROGRAM

BUSINESS SUPPORT SERVICES & ACCESS TO HIGH-VALUE RESOURCES



TRANSPORTATION

Transit & freight systems that are connected, shared and electric



CLEAN ENERGY

Integrated energy generation and storage systems



SMART, SUSTAINABLE CITIES

Circular economy: resilient food, water & waste systems



ENVIRONMENTAL

GHG reduction, renewable energy generation, water savings and waste diverted



SOCIAL

Employment for minorities and the previously excluded, increased female employment



ECONOMIC

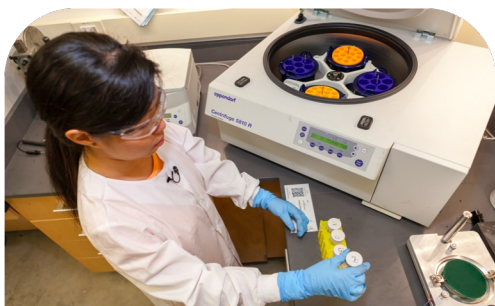
Engagement with disadvantaged communities, jobs created, hiring from workforce development programs



THE ORIGIN: Green Jobs Regional Partnership

As a recommendation from our 2021 Green Jobs Report, LACI will convene a regional Partnership to mobilize key stakeholders to work together to achieve green jobs targets by the 2028 Olympic and Paralympic Games in LA, and 2050 goal of growing from 338,000 green jobs in 2018 to 600,000 green jobs by 2050 county-wide by setting and pursuing milestones, targets, and actions needed for success.

GREEN JOBS REGIONAL PARTNERSHIP VISION



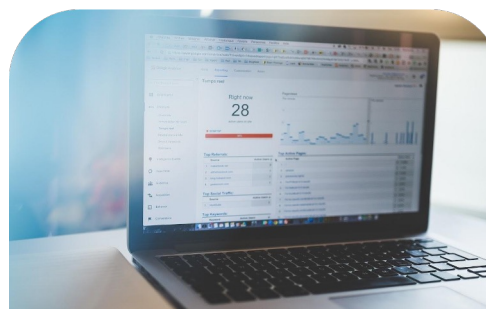
Build out Career Pathways and Bolster Workforce Pipeline

Build capacity to create more responsive and nimble workforce training for future segments of the green economy



Advance Equity and Inclusion

Increase underrepresented populations in green industries through training for high-road employment opportunities



Clearly Define Green Jobs and Track Metrics

Improve evaluation of green industry performance metrics at the state and federal level



Spur Public and Private Investment

Drive green job creation through public and private investment alongside continued federal workforce and infrastructure investment

Strategies, Policies, Pilots and Funding

DEVELOPING A ROADMAP

Define Scope and Vision

May 2024

- ✓ Define industry sector
- ✓ Identify key stakeholders
- ✓ Document existing climate goals this work supports
- ✓ Establish values to ground this work

- ❑ Compile education + skills needs
- ❑ Explore successful workforce initiatives
- ❑ Determine workforce training gaps
- ❑ Identify relevant funding + resources

June 2024 – Oct 2024

Determine Workforce and Training Needs

Develop Initiatives and Roadmap

Nov 2024 – Jan 2025

- ❑ Set Roadmap goals and KPIs
- ❑ Identify roles and responsibilities
- ❑ Mitigate risk
- ❑ Identify resource or policy change needs

- ❑ Develop communication plan
- ❑ Establish tracking + monitoring process and systems
- ❑ Determine next steps for the Partnership

Feb 2025

Communicate and Launch Roadmap

INDUSTRY SECTOR AND FOCUS

Direct & Indirect Emerging Cleantech and Green Jobs



TRANSPORTATION

Micro-EVs to Heavy Duty BEV

EVSE



CLEAN ENERGY

Energy Storage and Microgrids



SMART, SUSTAINABLE CITIES

Battery recycling

GREEN JOBS PARTNERSHIP

Leadership Group

1. **LACI** – Green Workforce Development Orgs. and Green Businesses
2. **City of LA, Mayor's Office** – Government Departments + WIOA WD Orgs
3. **LA County Department of Economic Opportunity** – Government Departments + WIOA WD Orgs
4. **Los Angeles Business Council** – Green Businesses + Associations
5. **Los Angeles Regional Consortium** – 19 LA Community Colleges + K-12 Career Technical Education
6. **UNITE-LA** – Cradle-to-Career Workforce Development
7. **Broad Foundation** – Philanthropy Focused on Workforce Development and Sustainability
8. **SoCal Edison** – Utilities
9. **Jobs to Move America** – Workers Representation

RESEARCH GROUP MEMBERSHIP

Education + Workforce Development



Public Sector



Philanthropies



EVSE + Energy + Transit Companies



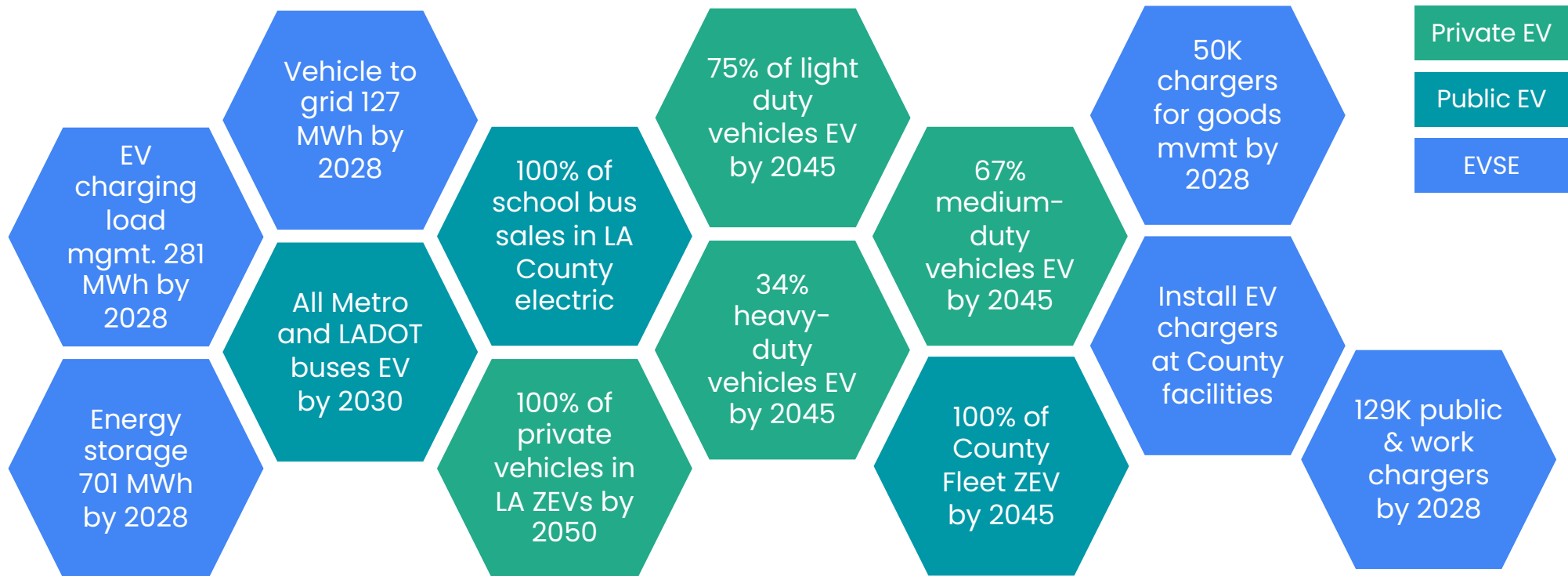
Unions + Economic Development



The Research Group is composed of about 30 agencies, organizations, and companies spanning education + workforce development, unions, government entities, philanthropic organizations, and EV-related companies.

EV and EV-Related Regional Targets

LACI, LA County, City of LA, SCE, LABC, LADWP



Determine Workforce and Training Needs

June 2024 – Oct
2024

- Compile education + skills needs
- Explore successful workforce initiatives
- Determine workforce training gaps
- Identify relevant funding + resources

Where are we now?

- Collected key foundational plans and studies
- Held two research group meetings complemented by surveys to gain insights on Roadmap focus:
 - Priority occupations
 - Outreach and awareness gaps
 - Training and curriculum gaps

What next's and how can you get involved?

- Next **Research Group meetings** – September 18 and October 23
- Formation of **Advisory Group** – Transportation Electrification industry leaders looking to be on the forefront of WD solutions and can support the sustainability of the Partnership

LA 2028 Olympics Green Workforce Opportunities, Anticipation, Planning, and Community Impact

Panelists:

Carolyn Hull, *General Manager*

*Economic & Workforce Development Dept, City of Los Angeles, LA28
Organizing Committee*

Kelly LoBianco, *Director*

County of Los Angeles DEO, LA28 Organizing Committee

Vincent Cordero, *Chief Personnel Analyst*

*CERS and Workforce Development, City of Los Angeles, LA28
Organizing Committee*



California Energy Commission Equitable Decarbonization Program

Lujuana Medina

Division Manager, Environmental Initiatives

County of Los Angeles



California Energy Commission Equitable Decarbonization Program

*Southern California Coalition for the
EBD Direct Install Program*

August 22, 2024



2024 County of Los Angeles Internal Services
Department, Energy and Environmental Service



CEC EBD Program Award Information

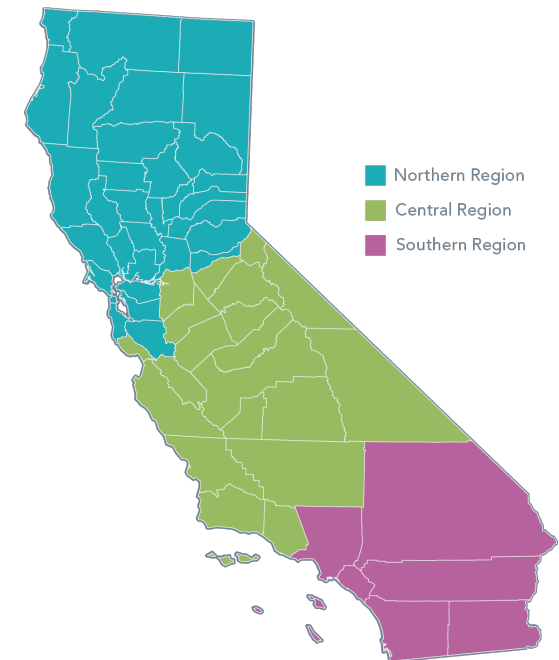
The Equitable Building

Decarbonization Program (EBD Program) is aimed to help eligible “income-qualified” residential customers electrify their homes at no cost, reducing greenhouse gas emissions and advancing energy equity.

The EBD Program will also encourage resiliency to extreme heat, indoor air-quality improvements, energy affordability, grid reliability, and local workforce opportunities.

EBD Statewide Direct Install Program Award

- Lead by the County of LA – the SoCal Coalition was awarded by the CEC to administer the Southern California Region EBD Direct Install Program
- **This award amounts to \$329 Million** in state and federal funding with a period of performance of five years beginning in Q1 2025 to Q4 2029

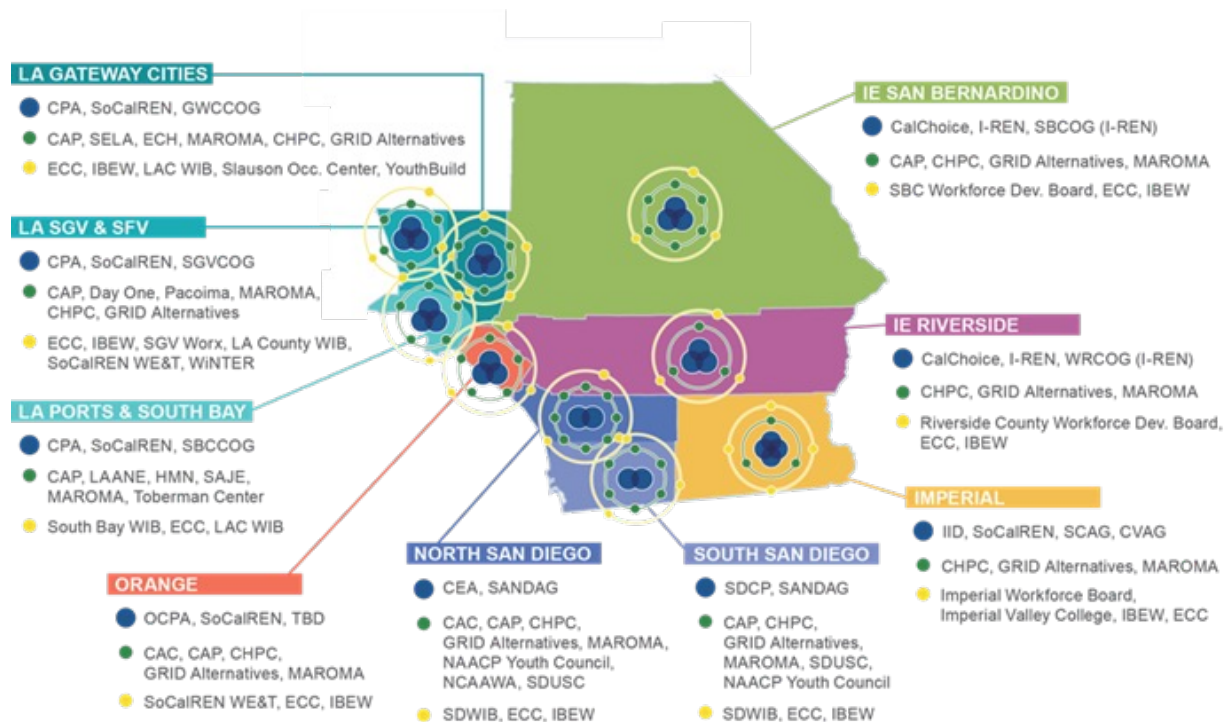


SoCal EBD Coalition



MISSION

The SoCal EBD Coalition has come together to align communities with resources and coordinate efforts to ensure the success of the CEC EBD Direct Install Program in Southern California. Our proposal is designed to be a one-stop shop providing comprehensive project support services from inception to completion for eligible residents to decarbonize their homes at no cost, reducing greenhouse gas emissions and advancing energy equity.



Overview and Purpose

The SoCal EBD Program is designed to be a one-stop-shop that provides comprehensive project support services from project inception to completion: gold standard white glove project delivery for home electrification.

In addition, the SoCal EBD Program is designed to build a trade ally network of electrification experts:

- Home Electrification Concierge
- Electrification Construction Managers Intake Advisors
- Installation Contractors

Types of No-Cost Upgrades



Heating and Cooling



Water Heating



Cooking



Laundry



Lighting



Building Envelope



Electrical



Remediation and Safety

Decarb Concierge

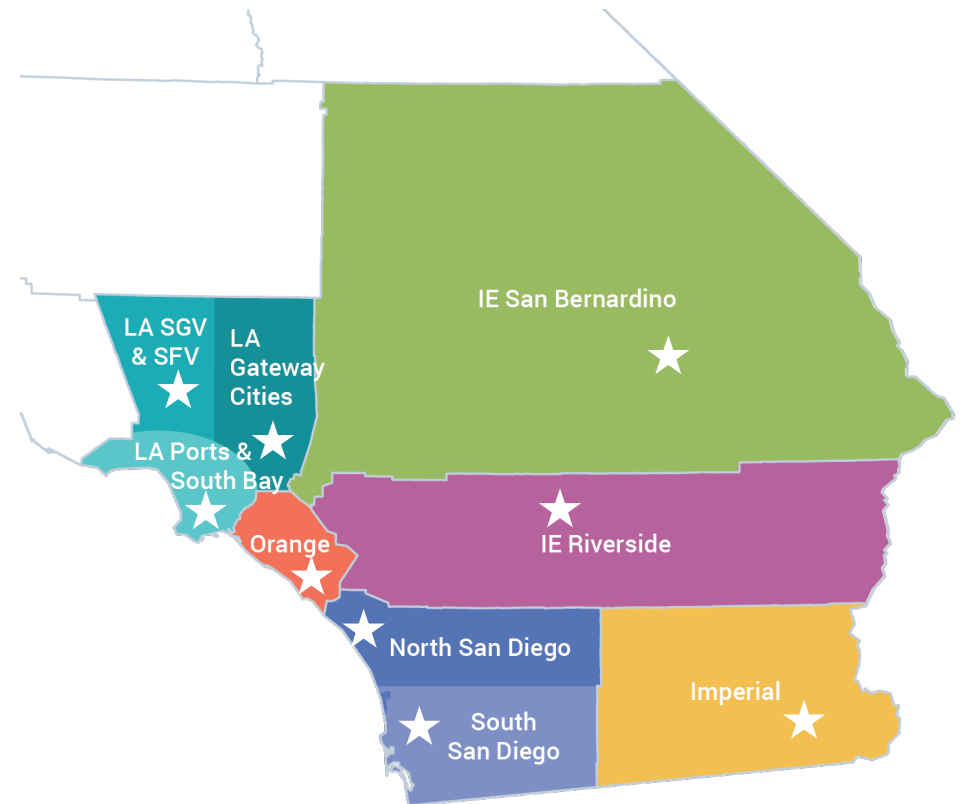
To further enhance the participant experience, the program will employ Decarb Concierge (DC) staff from within the communities it serves. The DC acts as the **single point of contact for program participants**, providing individualized support from enrollment through post-project satisfaction surveys and ongoing engagement opportunities as program ambassadors.

- The DC facilitates coordination of incentive layering, installation scheduling with homeowners and trade allies, permitting and inspections, and QA/QC processes.
- This continuous support ensures that participants have a seamless and positive experience throughout their decarbonization journey.



Area Coordinator

- In each subregion, the program will appoint an Area Coordinator (AC). The AC serves as the **single-point-of-contact** for all program resources and support for Power Partners and Energy Partners.
- ACs will be hired from within your communities and trained with dollars outside EBD.
- Your AC will hold bi-weekly subregion team meetings to hear from the local teams about their progress, successes, areas for improvement, and additional support needs.
- ACs will maintain program continuity, address local challenges, and ensure that community-centric outreach and education are consistently delivered across the region.



Workforce

Workforce plan prioritizes long-term career skills and local job creation through our established presence and success:

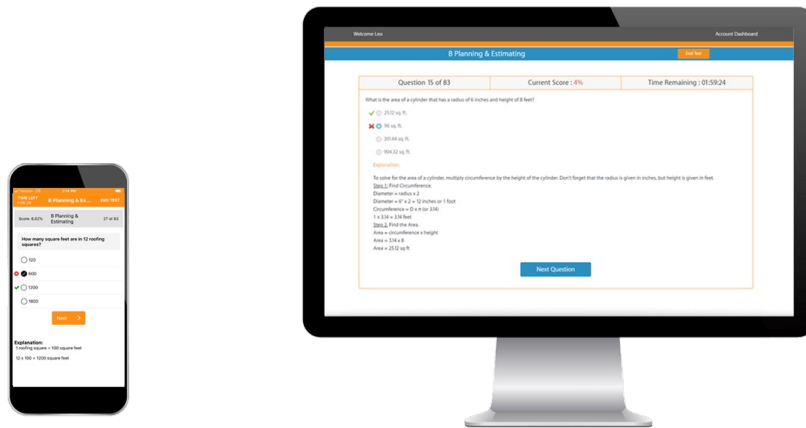
- Existing Network of Local Electricians and Contractors
- Infrastructure for Growing the Trade Ally Network
- Ensuring Quality Assurance and HOMES Compliance
- Leveraging and Securing Funding for Workforce Development

The project team's workforce development plan is critical to building the regional capacity needed to successfully deliver the EBD program in the southern region at scale over the next 5 years. Built on four pillars of success, the project team's workforce plan takes a comprehensive and sustainable approach to creating a skilled, inclusive workforce capable of delivering high-quality direct installations of residential decarbonization measures across Southern California.

Workforce Development

All subregions will be supported with a streamlined Decarb WE&T Platform in-a-box. Through this model, self-paced and group online training courses are supported with in-person training at local community colleges and training facilities, funded by funds outside of EBD to stretch impact and build local capacity.

The primary goals of the SoCal EBD Workforce Development approach is to bolster existing efforts and increase equitable opportunities for local workers.



Community Eligibility

- All households served by the program must be in an under-resourced community, as defined in statute. For this program, an under-resourced community is defined as a community located in one or more of the following geographic areas:
 - Disadvantaged Communities designated by the California Environmental Protection Agency for purposes of Senate Bill 535 (De León, Chapter 830, Statutes of 2012) (required for at least 50 percent of households served in each of the Northern, Central, and Southern regions)
 - Census tracts with median household incomes at or below 80 percent of the statewide median income
 - Census tracts with median household incomes at or below the threshold designated as low-income by the California Department of Housing and Community Development

Household/Property Eligibility

Building Types

- Single-family homes.
- Multifamily residential buildings of two or more units.
- Residential buildings such as assisted living facilities, transitional housing, and group homes. This does not include nonresidential buildings used as emergency makeshift shelters.
- Mixed-use buildings that include residential units. Only the residential portion, including common areas, is eligible for the program.
- Manufactured homes, mobile homes, and multifamily manufactured homes, as defined in Health and Safety Code Section 18007 et seq.
- Eligible buildings may be either owner-occupied or rented.

Eligible Fuel Types

- To be eligible, buildings must use natural gas, propane, or another fossil fuel as the primary fuel for space heating or water heating

Income Eligibility

Multifamily building:

- At least 66 percent of households earn less than or equal to 80 percent of AMI, or
- Rent for at least 66 percent of units are affordable to such households.

Income verification options:

- Rent regulatory agreement
- Pay stubs or tax returns of occupants
- Documentation showing that at least 66 percent of households are enrolled in income-qualified programs
- Documentation showing that rent for at least 66 percent of units is affordable to households with income equal to 80% of AMI

Single-family homes:

- Occupied by low-income or moderate-income households
- Low-income: $\leq 80\%$ of the local area median income (AMI)
- Moderate-income: 80-120% of AMI

Income verification options:

- Federal tax returns
- Pay stubs
- Proof of enrollment in another income-qualified program



Coalition Website

- To demonstrate the SoCal Coalition's commitment to the success of the EBD DI program in our region, LA County launched a microsite featuring logos linked to all partner websites, as well as additional information about our Coalition.
- The website features the CBO informational flyer and guidance on becoming part of the Coalition.
- Visit the website at <https://socalcoalitionebd.com/>

Partners Resources For CBOs

Southern California Equitable Building Decarbonization Coalition

Driving Resiliency, Equity, and a Clean Energy Future for Southern California

This coalition has come together to align resources and coordinate efforts to ensure the success of the California Energy Commission Equitable Building Decarbonization Direct Install Program (EBD DI) in Southern California. Our proposed SoCal EBD Program is designed to be a one-stop shop providing comprehensive project support services from inception to completion for eligible residents to decarbonize their homes at no cost, reducing greenhouse gas emissions and advancing energy equity.

City of Los Angeles
GRID ALTERNATIVES
CLIMATE ACTION CAMPAIGN
California Housing Partnership
SDUSC
PSR-LA
Esperanza
SELA COLLABORATIVE
ORANGE COUNTY POWER AUTHORITY
SOUTH BAY CITIES
SGVCOG

Join the Coalition



Contacts

County of Los Angeles
Internal Services Department (ISD)
Office of Energy & Environmental Service (EES)

Lujuana Medina
Division Manager
Environmental Initiatives
County of Los Angeles
(323) 881-3971
LMedina@isd.lacounty.gov

Closing Remarks

